



Candlelight Country Experience Introduction Letter



Thank you for finding us at Candlelight Country Experience ✨

We really appreciate support of our little campground and love our guests to experience big outback skies, and privacy within our tranquil campground space surrounded by trees, paddocks and nature.



It is most important to us that you feel comfortable and have an enjoyable stay, so we are sharing the below important information. ✅ We are understanding in the case of change-of-mind cancellations and allow last minute cancellations (24hrs of arrival) with full refund for your peace of mind. *Early check-in and late check out may be available on request the day prior pending bookings.*

🚫 Between 19 September until 1 April & Easter Long Weekend, fires are not permitted meaning it is unlawful to light a fire (This may be varied at Local Government discretion).



A scheduled experience may be cancelled and fully refunded in the case of 'Catastrophic' Weather Forecast by the weather bureau or if external factors outside our control deem camping unsafe.



We have attached our guest safety guidelines, information and are contactable 24hrs as your campground hosts and are happy to help with questions in the lead up to your stay 😊 ✨

Camping Information

📌 As we don't allocate camping sites, you can choose any vacant site. Please be mindful of the privacy of other guests and allow space for other guests to comfortably access shared Portaloo and Shower. Non potable water available from tap, no electricity.

Glampings Information



Bedding and linen is supplied, however please remember to bring towels.



There is a lock on Glampings which we provide with check-in information the day of arrival.



If you are bringing a Fur Baby, pets are allowed to sleep in the Glamping Tent if they are in a pet crate.



No pets in Glamping Caravan 'Tilly Van'

Inside glamping we provide you with;

- hot water bottles that you can fill, - plenty of blankets and,
- rechargeable lamps (we can arrange to swap these for you on request, they generally last two nights).

Outside glamping area is your own private;

- outdoor kitchenette,
- gas cooker, whistle kettle, utensils, cutlery, crockery, esky (BYO ice),
- camp chairs,
- fire pit (Seasonal), some fire cooking utensils and a lighter.

Between 19 September until 1 April & Easter Long Weekend, fires are not permitted



Shared Campground Portaloo and Warm Bush shower is approx 100m from Glampings.



🚫 No electricity in Glampings, we provide rechargeable lamps. Charge your devices while driving/ bring power bank. Contact management if help needed with charging.

Glamping Extras: 🎥💧 Choose from our extras to customise your stay. Pre-arrange or book when on site (pre-booking recommended to secure availability and avoid disappointment). Ask us for more information:



Projector Package ✨ GUEST FAVOURITE ✨ \$20 per night (Approx 4 + hours battery pack)



Warm Water Bath Package (Glamping Tent Only) \$30 for 2hrs

(Pending availability, a 2hr time slot can be booked commencing from 8am and finishing by 4pm)



Candlelight Country Experience Introduction Letter

Off-Grid & Access Information – Camping & Glamping



Limited phone range! If you aren't with Telstra or Optus, please let us know before you come as you may not be able to contact us when on site so we will need to make alternative arrangements of how you can contact us if needed.



Off-grid means no electricity. Generator, permitted times for campers are 10am – 11am and 2pm- 3pm, as tranquillity and comfort for all our guests is paramount. In cases where there are no other guests, generators can be used any time.



During permitted fire season, each site has its own fire pit. Wood is available to purchase on site or you can BYO. Kindling can be collected from the ground inside the camp area plantation trees. Please leave fallen wood in the native bush for habitat.



Water is accessible from the campground tap and is clean but non potable (not for drinking).



A reminder to bring warm clothes and jackets all year round.



As it may not be convenient to 'pop to the shop' we have a 24hr Shop Trailer on site at the entry which is an honesty system and accepts (Cash and PayPal / Credit Card payments). Available for purchase are;

- Bottled water,
- Some basic non perishable food items (noodles, canned, jars, snacks).
- In permitted fire season, firewood is \$10 per bucket (or you can BYO wood).



Between 19 September until 1 April & Easter Long Weekend, fires are not permitted meaning it is unlawful to light a fire (This may be varied at Local Government discretion).



The local grocery store in Kukerin is 10 minutes drive away, open weekdays, closes early at 11am on Saturday and is closed on Sundays and Public Holidays). Lake Grace IGA Grocery Shop (30mins drive) is open 7 days but may not open Public Holidays, phone first to check. There are local Pubs, Cafes and Restaurants within 10-30 mins away). <https://www.candlelightcountryexperience.com/activities>



There is a shared campground warm bush shower and Portaloo onsite available to all campers in the grounds. There is a free off site dump point at Stubbs Park, 70 Bahrs Rd, Dumbleyung.



The campground is 6km of well maintained gravel road off the highway (2wd accessible) and is tucked away from traffic and keep the campground driveway discreet with only our guests having the rope gate access code to help ensure their privacy for stays (we will provide codes the morning of your arrival). The campground is very large but we only have one site per row of trees helping to maintain privacy, peace and tranquillity. Being remote we only get some local farming traffic however for additional peace of mind we have a security camera at the campground entry also.

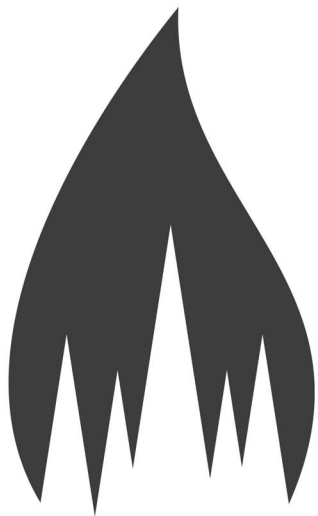


If you are bringing a Fur Baby, we are in a rural setting and there are large animals and small animals near by, and we need to keep both pets and farm animals safe. Are you aware that we allow pets only if they are on a leash at all times outside? If you're happy with this, it is a great place for walking pets!



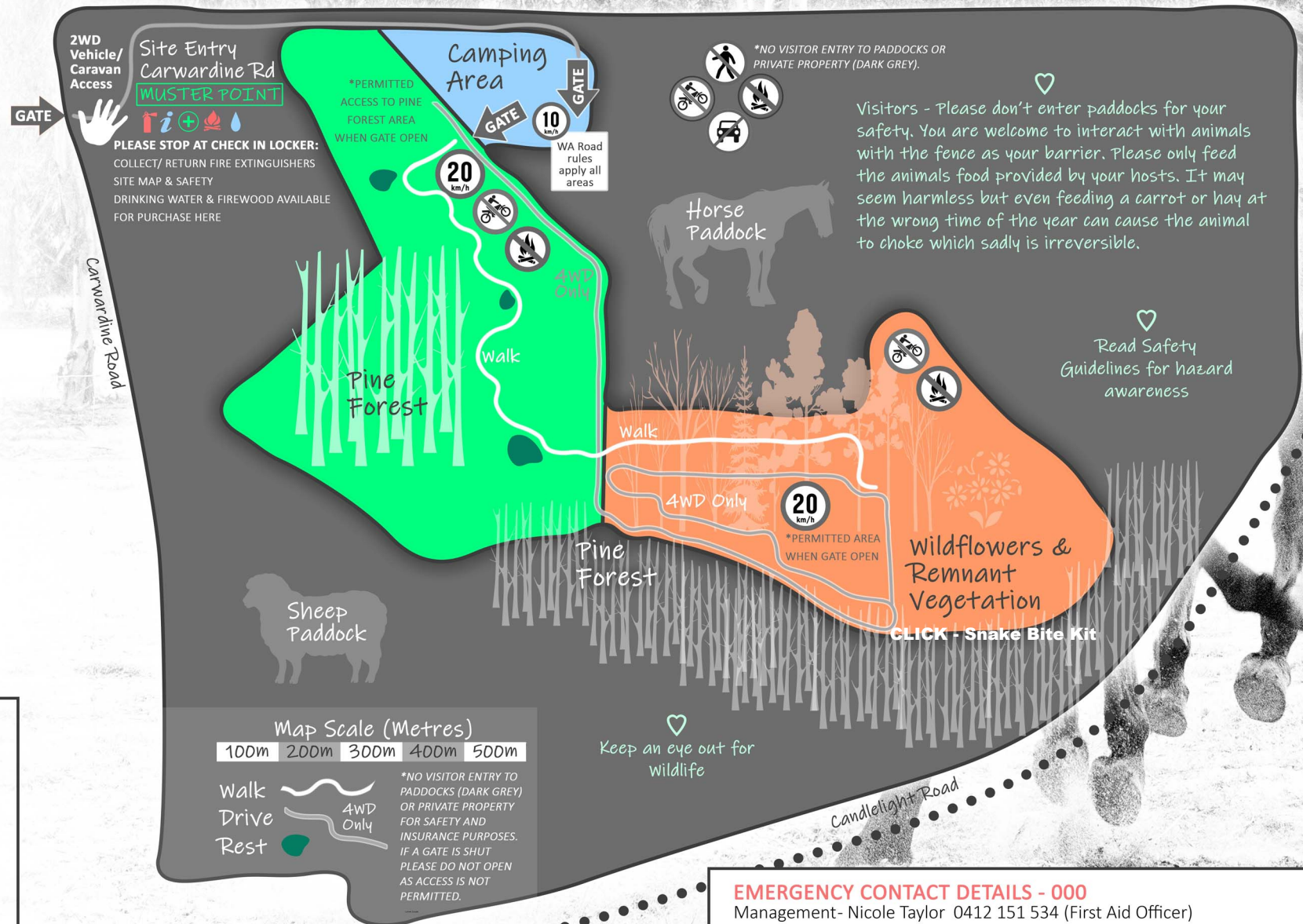
We have attached our guest safety guidelines, information and are contactable 24hrs as your campground hosts and are happy to help with questions in the lead up to your stay 😊✨

60 Hectares/ 150 Acres of tranquility
to explore at your leisure.....



We want you to enjoy the sense of freedom that nature has to offer. For this reason you are welcome to explore the Camping (Blue), Pine Forest (Green) and Wildflower and Remnant Vegetation (Orange) Areas as our visitors when gate is open. Designated tracks are to direct you and please ensure you have a mobile phone with you at all times as well as adequate water and protective clothing.

Remember Fire Safety! We are in a very high bushfire risk zone. Driving over long grass can cause fire, please only smoke in designated areas and only use the fire pits provided between 1 April to 18 September. All other months it is prohibited to light a fire. **A fire extinguisher is allocated to each site, these can be collected on arrival from entry check in locker.** **BYO Drinking water and firewood or these are available to purchase from check in locker.** **Gathering firewood from property is not permitted.**



EMERGENCY CONTACT DETAILS - 000

Management- Nicole Taylor 0412 151 534 (First Aid Officer)
Lake Grace Hospital 9890 2222 (Open 24 hours) | Emergencies 000 (Kukerin Ambulance, Fire)
Safety Information: <https://www.candlelightcountryexperience.com/guestinformation>

SITE LOCATION DETAILS

Cnr of Carwardine & Candlelight Road (Entry Carwardine Road) | Property Address: 1091 Candlelight Rd, North Kukerin, WA 6351 | Driveway Entry Co-ordinates-33.219525, 117.989520

If you are unsure - Just ask :)



VISITOR SITE SAFETY GUIDELINES

Welcome to Candlelight Properties. We want you to enjoy your experience with the ability to undertake activities while ensuring you keep yourself and others safe.

By entering the property and campground at 1091 Candlelight Road North Kukerin WA, you agree to these safety practices in this short Work Health & Safety (WHS) Guideline & Site Induction for Visitors & Parents/Guardians of Children to provide awareness of possible hazards. We really appreciate your time to read this to best prepare for an enjoyable, safe experience. Thank you

Introduction: Candlelight Properties acknowledge that rural areas are a unique environment for visitors to enjoy. We believe this is an important component in creating the future link to the land. These Site Work Health & Safety Induction Guidelines outline potential hazards and controls to minimise risk to the safety of our family, visitors, fur friends, wildlife and nature. These guidelines help make Candlelight Properties a safe place to live and visit.

Responsibilities: Candlelight Properties have responsibilities regarding the safety and wellbeing of visitors to their properties. That is why these guidelines have been developed and we need your help in following these to keep everyone, including fur friends and nature safe! Visitors on Candlelight Properties are personally responsible for the supervision and safety of their children and visitors and must adhere to the following Candlelight Properties WHS guidelines. Visitors to Candlelight Properties must make themselves aware of potential hazards before accessing the area. Please only visit permitted areas and if unsure ask Candlelight Properties Management. Note: With the size and scale of surrounding broadacre farming and the potential for changing conditions, it is not practicable nor possible for Candlelight Properties Management to be aware of every potential hazard.

Simple things we can all do to help identify hazards and minimise Work Health & Safety Risks at Candlelight Properties, 1091 Candlelight Road North Kukerin WA:

PERMITTED AREAS: See Site Map www.candlelightcountryexperience.com/guestinformation. Please do not enter stock paddocks or open gates other than the main entrance gate via the code provided. Gates will be opened during day light hours to the permitted activity areas (e.g. wildflower tracks). Ensure someone knows where you are, have a mobile phone with you, emergency contact details as well as adequate water and protective clothing.

NON POWERED BIKES: Parent/guardian must ensure the child/visitor rides at a safe speed for the terrain and conditions and wears a helmet at all times. Powered bikes (Motorcycles/ E-Scooters) are not permitted on the property for insurance reasons and comfort of other guests.

ROAD VEHICLES: Only registered vehicles (Department of Transport) are permitted on the property and must be insured. Road safety rules for 4WD vehicles on property designated tracks apply with the use of seatbelts, driving to conditions, noise, and personal protective equipment. Unless there is a manufacturers purpose built passenger seat, never let anyone, especially children, ride as passengers on bikes, or the trays/ trailers of vehicles. Registered motorcycles are permitted to access the camping area for camping purposes only. Motorcycle riding for leisure is not permitted anywhere on the property for the comfort of other guests and insurance purposes. Registered Motorcycles (Department of Transport) are permitted on surrounding public roads in accordance with WA Road Rules.

SLIPS, TRIPS AND FALLS: There are no dams in the permitted areas but are neighboring. Supervise children when they are around water that cannot be adequately fenced (e.g. water troughs) – remember that toddlers can drown in only a few centimetres of water. Any water body may be unsafe and contaminated. Do not climb farm infrastructure like silos as they can tip over. Look where you are walking, there are uneven, rocky and sandy ground surfaces.

FARM ANIMALS, FUR FRIENDS, WILDLIFE & CRITTERS: Ensure good hygiene practices to reduce the risk of contracting diseases or illnesses transmitted by animals. Do not enter any paddock to interact with animals, this can be done with the fence as your safety barrier, take notice of the animals body language to ensure they are happy to interact with you – be calm, move slowly, give the animal space, avoid loud noises, avoid their hind legs, wear safety boots/shoes – and remember that even good tempered stock can knock people over, bite, bunt, kick and cause injury. (E.g. a ram might be friendly but will still bunt you which may cause serious injury.) Types of farm animals you may encounter are; Horses, Sheep, Working Dogs, Chooks. Only feed animals food provided by or with permission from management as improper feeding can cause serious illness or death in stock. Children must be supervised around animals at all times. Wildlife like to keep to themselves however if you encounter them in the area; such as Kangaroos, foxes, rabbits, birds, bees, snakes, spiders, ants- keep your distance where possible, stay calm and slowly move away. Visiting dogs may be approved on property by management but must be kept on a lead or contained in a manner that will not cause harm to people, stock, wildlife or themselves. The greatest risk to visiting dogs is getting lost, baiting programs, dams and other animals.

VEGETATION & ENVIRONMENT: Please refrain from parking under overhanging tree branches, they have the potential to fall. There are prickly native plants and thistles on the property, their root system is important to our soil to stop it from eroding in the wind in dry months. Please wear appropriate footwear for the terrain. Feel free to admire and take photos of vegetation and flowers but please don't pick them. These areas are fenced to encourage vegetation growth and provide habitat to native animals. Be aware of weather conditions, if unsafe move to a protected area. There is the potential of exposure to dust, pollen and neighbouring farming operations which are out of our control. Please reduce your environmental footprint by not littering, taking your rubbish with you when you leave, ensuring you are self-contained (bring food, drinking water, toilet facility) and be aware there is no running water at the site. Generators are permitted for use on designated generator pads to reduce fire risk and during the times signposted at the entrance gate. Generators are only to be used while you are at the campsite to reduce fire risk from faults.



Care and caution must be exercised by visitors on Candlelight Properties at all times. Candlelight Properties reserve the right to terminate visitor bookings in breach of these guidelines. In circumstances Candlelight Properties Management deem unsafe, the site may be evacuated at short notice and refund given to visitors.

Please dial 000 in emergencies and report all incidents or safety concerns to management immediately 0412 151 534. Remember to behave in a manner to keep yourself and others safe - Thank you :)

LAKE GRACE (DISTANCE 30 MINUTE DRIVE)

Vineyard Walkers Hill - Lake Grace	FOOD DRINKS	0447 651 418	
Rosies Cafe & Bakery – Lake Grace	FOOD COFFEE	0448 528 352	
Lynnie's Cafe – Lake Grace	FOOD COFFEE		
Hotel + Bottle Shop - Lake Grace	FOOD DRINKS	(08) 9865 1219	
Visitor Centre - Lake Grace	INFO ACTIVITIES	(08) 9865 2140	
Swimming Pool - Lake Grace	ACTIVITY	(08) 9865 1144	
Business Directory - Lake Grace	TRADES & SERVICES		

KATANNING (DISTANCE 60 MINUTE DRIVE)

Tourism - Katanning	INFO THINGS TO DO	
Business Directory -Katanning	TRADES & SERVICES	

KUKERIN ⁽¹⁰⁾/ DUMBLEYUNG ⁽³⁰⁾/ NYABING ⁽³⁰⁾/ WAGIN ⁽⁵⁰⁾

DISTANCE IN MINUTES

Kukerin General Store	GROCERY POST FUEL	(08) 9864 6010	
Kukerin Community Hub	FOOD DRINKS	(08) 6864 6338	
Dumbleyung Tavern	FOOD DRINKS	(08) 9863 4817	
Dumbleyung/ Kukerin Tourism	INFO THINGS TO DO		
Dumbleyung/ Kukerin Business Directory	TRADES & SERVICES		
Nyabing Hub & Inn	FOOD DRINKS	(08) 9829 1015	
Nyabing Tourism	INFO THINGS TO DO		
Wagin - Palace Hotel & Café	FOOD DRINKS COFFEE	(08) 9861 1003 + Bottleshop	
Wagin Cinema - Betty Terry Theatre * COOL EXPERIENCE *	POPCORN SNACKS	SCHEDULE  TICKETS	



Projector Package includes Mini Projector, Bluetooth Speaker and Power Pack for \$20 per night.

Great for nights where the weather isn't as kind!



Projector Package includes Mini Projector, Bluetooth Speaker and Power bank for \$20 per night. You can stream from your smart phone or choose from the preloaded movies on a USB we provide.

(Some streaming services don't work on projectors for copyright reasons e.g Netflix. Others work great like YouTube)

CONTACT HOSTS TO BOOK IN ADVANCE TO ENSURE AVAILABLE
GLAMPINGS ONLY - Glamping Tent & Vintage Caravan 'Tilly Van'



Warm Water Package includes a camping hot water system \$30 for 2hrs.

Put together your snacks and drinks and enjoy a warm bath while you relax under big skies overlooking the rolling paddocks.

Be mindful when it is cold out, the outside temperature cools the water pretty quickly, so will require warm water top ups or running the gas water system throughout the bath time.

We love to provide this experience, so to make it possible, we keep the Warm Water Package to a 2hr time slot to control water and gas use. It takes approximately 30 minutes to fill before jumping in.

(Being in a low rainfall area we need to get water trucked in, put it in a tank which then comes out of the tap).

CONTACT HOSTS TO BOOK TIME IN ADVANCE TO ENSURE AVAILABLE

GLAMPING TENT ONLY - Pre-book times starting 8am finishing 4pm

CANDLELIGHT COUNTRY EXPERIENCE - CAMPING AREA MAP



Camp Entry
1091 Carwardine Rd
Gate Access Code

***PERMITTED
ACCESS TO PINE
FOREST AREA
WHEN GATE OPEN**

GLAMPING

GLAMPING

SHOP TRAILER



Camping Area

PORTALOO

TAP

SHOWER

GATE

GATE

• SNAKE BITE KIT

**WA Road
Rules Apply
All Areas.
Narrow
tracks, drive
slow.**

*Map
Scale*

< 100m >

**20
km/h**



**Campground
area in blue
section on Map.**

**EMERGENCIES: 000
HOSTS: 0412 151 534**

EVACUATION DIAGRAM



Address: Lot 13238 Candlelight Road, North Kukerin
Contact Person: Nicole & Jonny Taylor
Contact Number: 0412 151 534 / 0438 950 045

Option 1:

Dumbleyung town centre or Stubbs Road when a designated Welfare Centre via North on Carwardine Road and west on Dumbleyung-Lake Grace Road.

Option 2:

Kukerin town centre or designated Welfare Centre via South on Carwardine Road, east on Candlelight Road and east on Kukerin Road.

The primary action to follow in a bushfire event is to **EVACUATE**

Controlled Evacuation – Early evacuation to allow Guests to gather their belongings prior to evacuating. Enact if bushfire is within 5 km or 5 hrs, DFES Watch & Act Warning or Signs of smoke from the nearby area.

Emergency Evacuation – Account for all Guests and immediately evacuate.
Do not connect caravans

Enact if bushfire is within 3 km or 3 hr or signs of smoke arising from the immediate surrounds.

On **Catastrophic Fire Danger Rating** days the Site will be closed and evacuated.
Monitor the ABC Local Radio, 630 AM, or the DFES website for updates.